



IN THE PRESENCE OF

transcribed by Miguel Falcão



(finger style)

Bass Guitar

Sheet music for Bass Guitar, transcribed by Miguel Falcão. The music is in 4/4 time, key of D major (indicated by two sharps), and is written for finger style. The score consists of 41 measures, divided into systems of five measures each. The notation includes various musical symbols such as notes, rests, accidentals, and dynamic markings (e.g., f , p). The piece features a complex, melodic line with many accidentals and a strong rhythmic pattern. The first system (measures 1-5) includes a key signature change to D major. The second system (measures 6-10) includes a key signature change to D minor (indicated by two flats). The third system (measures 11-15) includes a key signature change to D major. The fourth system (measures 16-20) includes a key signature change to D minor. The fifth system (measures 21-25) includes a key signature change to D major. The sixth system (measures 26-30) includes a key signature change to D minor. The seventh system (measures 31-35) includes a key signature change to D major. The eighth system (measures 36-40) includes a key signature change to D minor. The ninth system (measures 41-45) includes a key signature change to D major.

45 (pick)

50

The musical score for the 50th measure is written on a single staff with a bass clef and a key signature of one sharp (F#). The measure begins with a whole note G2, followed by a quarter note A2, and a quarter note B2. This is followed by a half note C3, and then a half note D3. The next part of the measure consists of a quarter note E3, a quarter note F#3, a quarter note G3, and a quarter note A3. The final part of the measure is a half note B3, which is tied to the next measure. The measure number '50' is written at the beginning of the staff.

62

70

70

76

76

81

87

Measure 87: Bass clef, key signature of one sharp (F#). The measure contains a series of eighth and sixteenth notes, many with accents and slurs, suggesting a rapid, rhythmic passage.

92

A musical score for the song 'The Rose Tree'. It features a single melodic line on a five-line staff with a bass clef and a key signature of one sharp (F#). The music is written in a common time signature of 4/4. The melody consists of a series of eighth and quarter notes, with some notes beamed together. The score is divided into measures by vertical bar lines. The first measure contains a whole note, and the subsequent measures contain eighth and quarter notes. The key signature is indicated by a sharp sign on the F line. The score is presented in a clean, black-and-white format.

96

Musical notation for measure 96, bass clef, 4/4 time, key of D major. The measure contains a sequence of eighth and sixteenth notes, including a triplet of eighth notes.

100

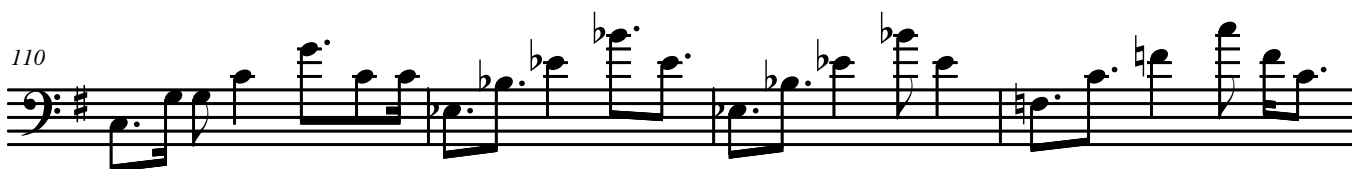


105

(finger style)



110



114

(pick)



119



126



132



138



143



149



153



158



164



169

